

MNK-L and MNK-L-N

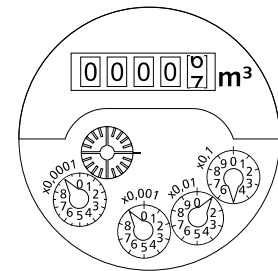
Multi-jet wet dial meters for cold water in a plastic housing

Our new range of multi-jet wet dial meter models is a further development of the classic MNK. Our engineers have successfully combined the high-precision MNK measuring insert with an innovative polymer composite housing. The result is the new MNK-L/MNK-L-N plastic water meter. Its exceptional product characteristics are its low weight, its low starting flow and its reliable measurement characteristics.

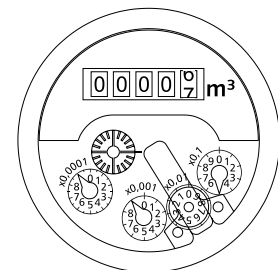
The MNK-L-N can be retrofitted with a pulser and is therefore ready for all future AMR-applications.

Performance characteristics in overview

- Light, robust and well-designed
- Almost 50% lighter than a meter with a brass housing
- High-quality mineral glass inspection window
- Optional: UV-resistant plastic (MNK-N)
- Operating temperature up to 30°C
- Operating pressure PN 16
- Water meter for horizontal and vertical installation
- Display range from 0.1 l to 99999 cubic metres
- Version MNK-L-N is retrofittable with pulser (reed) for remote readout
- Standard pulse value 10 l/pulse, optional 100 l/pulse available
- Approved in accordance with MID



MNK-L

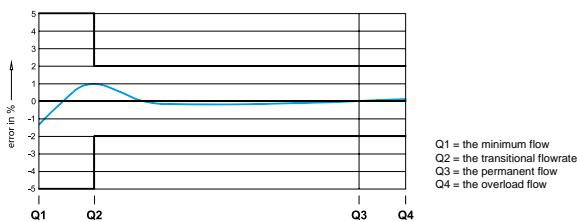


MNK-L-N

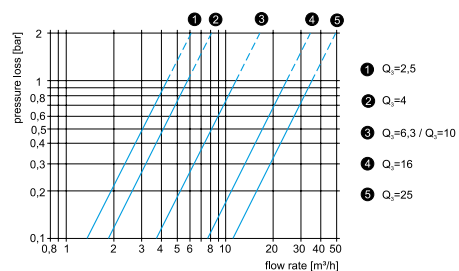


Technical data MNK, MNK-N, MNKI-N, MNK-RDM										MNK-L, MNK-L-N, MNKI-L-N	
Permanent flow	Q ₃	m ³ /h	10	10	16	25	25	25		2,5	4
Comparable to nominal flow (EWG)	Q _n	m ³ /h	6	6	10	15	15	15		1,5	2,5
Attainable measuring range	Q ₃ /Q ₁	R	200H/80V	200H/80V	200H/63V	160H	160H	160H		200H/50V	200H/80V
Standard measuring range (*)	Q ₃ /Q ₁	R	80H/40V	80H/40V	80H/40V	80H	80H	80H		80H/40V	80H/40V
Comparable to metrological class (EWG)	class		B-H/A-V	B-H/A-V	B-H/A-V	B-H	B-H	B-H		B-H/A-V	B-H/A-V
Overload flow (**)	Q ₄	m ³ /h	12,5	12,5	20	31,3	31,3	31,3		3,13	5
Minimum flow (**)	Q ₁	l/h	125H/250V	125H/250V	200H/400V	313H	313H	313H		31H/63V	50H/100V
Start-up flow rate	-	l/h	<10	<10	<20	<25	<25	<25		<4	<5
Display range	min	l	0,1	0,1	0,1	0,1	0,1	0,1		0,1	0,1
	max	m ³	99999	99999	99999	99999	99999	99999		99999	99999
Maximum temperature	-	°C	30	30	30	30	30	30		30	30
Operating pressure, max.	PN	bar	16	16	16	16	16	16		10	10
Pulse value		l/pulse	10/100	10/100	10/100	10/100	10/100	10/100		10/100	10/100
Dimensions:											
Nominal diameter	DN	mm	25	32	40	50	50	50		15	20
		inch	1"	1 ¼"	1 ½"	2"	---	---		½"	¾"
Overall length without connectors (*)	L2	mm	260	260	300	300	270	300		165/170/190	190
Overall length with connectors approx.	L1	mm	378	384	428	444	---	---		245/250/270	286
Thread meter G x B	D1	inch	1 ¼"	1 ½"	2"	2 ½"	flange	flange		¾"	1"
Thread connector R x	D2	inch	1"	1 ¼"	1 ½"	2"	---	---		½"	¾"
Width approx.	B	mm	95	95	110	110	165	165		99	99
Height (plastic glass) approx.	H1 k*	mm	120	120	---	---	---	---		115	115
Height (mineral glass) approx.	H1 m*	mm	125	125	150	150	175	175		---	120
	H2	mm	~40	~40	~50	~60	~75	~75		~30	~30
	H3	mm	15	15	15	15	15	15		15	15
Height of MNK-RDM	H4		-	160	-	-	-	-		-	-
Weight approx.	-	kg	2,1	2,2	3,6	4	9,5	9,5		0,6	0,6

(*) Other measuring ranges (R) and overall lengths on request. (**) The data refer to the standard measuring range
k* plastic glass (MNK-N, MNKI-N, MNK-L-N) / m* mineral glass (MNK, MNK-L)



Typical accuracy curve



Typical pressure loss curve