

Mod.

TAN-X5

Contatore per irrigazione
Irrigation water meter

ISO 4064



Mod. TAN-X5

Contatore tangenziale per irrigazione, quadrante asciutto, trasmissione magnetica. Perdite di carico ridotte al minimo. Adatto alla contabilizzazione di acque impure (presenza di sedimenti).

Mod. TAN-X5

Tangential water meter for irrigation purposes, dry dial, magnetic transmission. Negligible head loss. Suitable for the measuring of dirty water (solid sediments).

Mod. TAN-X5

Medidor tangencial para riego, esfera seca, transmisión magnética. Pérdida de carga reducida al mínimo. Adaptado a mediciones de agua que contengan detritos sólidos.

Mod. TAN-X5

Tangentialer wasserzähler für bewässerung, trockener quadrant, magnetisches getriebe. Geringste lastverluste. Geeignet für die Anerkennung von verunreinigtem Wasser (Präsenz von Sedimenten).

Mod. TAN-X5

Compteur d'eau à hélice tangentielle pour l'irrigation, cadran sec, transmission magnétique. Pertes de charge réduites au minimum. Adapté à la mesure d'eaux impures (présence de sédiments).

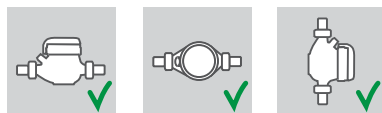
Мод. TAN-X5

Тангенциальный счетчик с сухим квадрантом и магнитной трансмиссией для систем ирригации. Минимальная потеря давления. Пригоден для использования в грязной воде с большим содержанием посторонних включений.

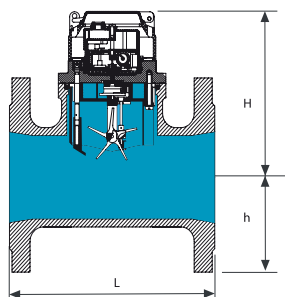
Caratteristiche tecniche - Technical features

| Calibro Size | mm in | 50 (2") | 65 (2"1/2) | 80 (3") | 100 (4") | 125 (5") | 150 (6") | 200 (8") |
|--|--------------------------------|------------|---------------|------------|-------------|-------------|-------------|-------------|
| Portata Max Max Flow Rate | Q_{max} m ³ /h | 70 | 100 | 150 | 250 | 350 | 500 | 900 |
| Portata nominale Nominal Flow Rate | Q_n m ³ /h | 35 | 50 | 75 | 125 | 175 | 250 | 450 |
| Portata di transizione Transitional flow rate $\pm 2\%$ | Q_t m ³ /h | 10,5 | 15 | 22,5 | 37,5 | 52,5 | 75 | 135 |
| Portata minima Min flow rate $\pm 5\%$ | Q_{min} m ³ /h | 2,8 | 4 | 6 | 10 | 14 | 20 | 36 |
| Max temperatura Max temperature | °C | 50 | 50 | 50 | 50 | 50 | 50 | 50 |
| Pressione max ammissibile Max admissible pres. MAP | bar | 16 | 16 | 16 | 16 | 16 | 16 | 16 |
| Max Lettura quadrante Max reading dial | m ³ | 9.999.999 | 9.999.999 | 9.999.999 | 9.999.999 | 9.999.999 | 9.999.999 | 9.999.999 |
| Min Lettura quadrante Min reading dial | l | 2 | 2 | 2 | 2 | 2 | 20 | 20 |

Posizione d'installazione Installation position

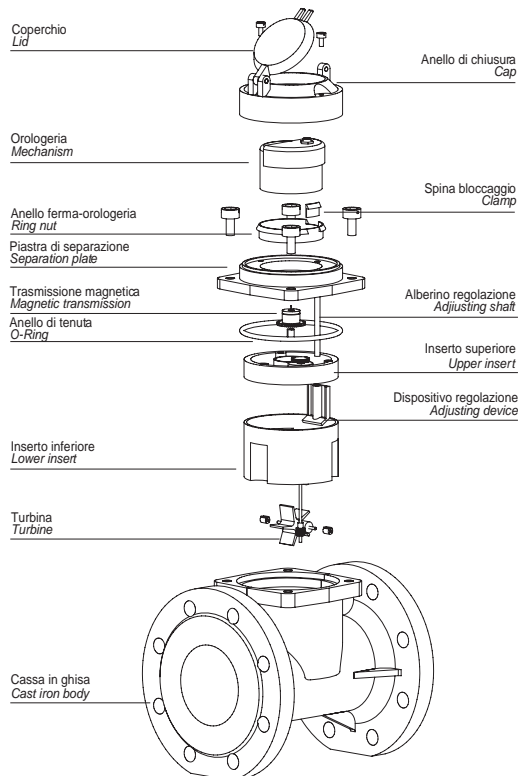


Dimensioni e pesi - Dimensions and Weights



| Calibro Size | mm in | 50 (2") | 65 (2"1/2) | 80 (3") | 100 (4") | 125 (5") | 150 (6") | 200 (8") |
|-----------------|----------|------------|---------------|------------|-------------|-------------|-------------|-------------|
| L | mm | 200 | 200 | 225 | 250 | 250 | 300 | 350 |
| H | mm | 150 | 150 | 150 | 150 | 150 | 152 | 195 |
| h | mm | 80 | 92,5 | 100 | 100 | 125 | 142,5 | 170 |
| Pesi Weight | kg | 11,5 | 13 | 15 | 19 | 24 | 30 | 48 |

Flange ISO 7005-2 / EN 1092-2 PN16



Versione base - Basic version

- » Classe A-HV ISO4064
- » Disponibile nella sola versione per acqua fredda 0°C-50°C
- » Trasmissione magnetica
- » Lettura diretta su 7 rulli numeratori
- » Quadrante asciutto
- » Predisposizione per montaggio sistema lancia-impulsi
- » Meccanismo estraibile
- » Con coperchio

- » Classe A-HV ISO4064
- » Available for cold water 0°C-50°C only
- » Magnetic transmission
- » Direct reading on 7 numeric rolls
- » Prearranged for pulse emitter device mounting
- » With removable insert
- » Dry dial
- » With lid

Su richiesta - Upon request

- » Equipaggiato con sistema lancia-impulsi
- » Equipped with pulse emitter device

