

MTKD-L-N and MTKD-L-M

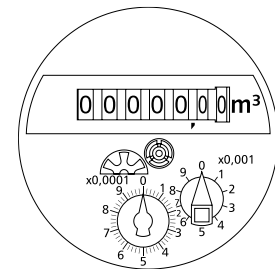
Multi-jet dry dial meter with an innovative plastic housing

The new series of our multi-jet dry dial meter are an improvement of the classical MTK. Its main features are a low starting flow and reliable performance even with aggressive water qualities or dezincification effects. Constant development guarantees accurate measuring results and the best long-term stability.

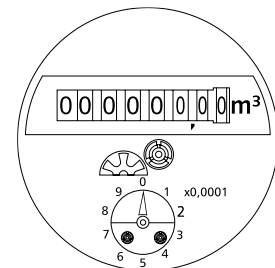
The MTKD-L is equipped with the new D-register and ready for all future AMR-applications. MTKD-L is available in two versions: MTKD-L-N with 7-digit rollers and magnet pointer for pulse output. MTKD-L-M with 8-digit rollers register and modulator disc for non-reactive scanning for radio, M-Bus or pulse.

Performance characteristics in overview

- Almost 50% lighter than a meter with a brass housing
- Housing made from high-quality UV-resistant polymer composite
- Dry dial register with shielded magnetic coupling
- High-quality UV-resistant plastic inspection window
- Operating temperature up to 30°C
- Operating pressure PN 16
- Water meter for horizontal installation
- Register available as copper can version (IP 68)
- Version MTKD-L-N with pulse output (reed) for remote readout
- Standard pulse value 1 l/pulse, optional 10 l/pulse available
- Version MTKD-L-M with modulator disc for non-reactive scanning
- Approved in accordance with MID



MTKD-L-N



MTKD-L-M



Technical data MTKD-N, MTKDI-N, MTKD-M						MTKD-L-N, MTKDI-L-N, MTKD-L-M	
Permanent flow	Q ₃	m ³ /h	16	25	25	2,5	4
Comparable to nominal flow (EWG)	Q _n	m ³ /h	10	15	15	1,5	2,5
Attainable measuring range	Q ₃ /Q ₁	R	160H 25any	125H/40V	125H/40V	100H/31,5V	160H/40V
Standard measuring range (*)	Q ₃ /Q ₁	R	R25 R80H	80H/40V	80H/40V	R25 R80H	R25/R80H
Comparable to metrological class (EWG)	class		A / B-H	B-H	B-H	A / B-H	A/B-H
Overload flow (**)	Q ₄	m ³ /h	20	31,3	31,3	3,13	5
Minimum flow (**)	Q ₁	l/h	640 / 200H	313H	313H	100 / 31H	160/50H
Start-up flow rate	-	l/h	<40	<25	<25	<10	<10
Display range	min	l	0,1	0,1	0,1	0,02	0,02
	max	m ³	R8 99999.999 R7 99999.99	R8 99999.999 R7 99999.99	R8 99999.999 R7 99999.99	R8 99999.999 R7 99999.99	R8 99999.999 R7 99999.99
Maximum temperature	-	°C	30	30	30	30	30
Operating pressure, max.	PN	bar	16	16	16	16	16
Pulse value		l/pulse	1/10	1/10	1/10	1/10	1/10
Dimensions:							
Nominal diameter	DN	mm	40	50	50	15	20
		inch	1 ½"	2"	---	½"	¾"
Overall length without connectors (*)	L2	mm	300	300	270	165/170	190
Overall length with connectors approx.	L1	mm	428	444	---	245/250	286
Thread meter G x B	D1	inch	2"	2 ½"	flange	¾"	1"
Thread connector R x	D2	inch	1 ½"	2"	---	½"	¾"
Width approx.	B	mm	110	110	110	99	99
Height (plastic glass) approx.	H1 k*	mm	150	150	175	120	120
	H2	mm	50	60	75	35	30
	H3	mm	15	15	15	15	15
Weight approx.	-	kg	4,0	4	9,5	0,6	0,6

(*) Other measuring ranges (R) and overall lengths on request. (**) The data refer to the standard measuring range
k* plastic glass

