

Mod.

# CPR-M3

Getto singolo quadrante bagnato  
Single jet wet dial



Disponibile versione  
acqua calda 30-90°C  
Available version  
for hot water 30-90°C

## Mod. CPR-M3

Getto singolo, quadrante bagnato, lettura diretta. Dotato di anello anti-frode con coperchio orientabile a 360°. Realizzato nelle versioni per acqua fredda (30°C) e acqua calda (90°C) nei calibri  $\varnothing$  15 e 20 mm (1/2"-3/4"). Garanzia di lunga durata.

## Mod. CPR-M3

Single jet, wet dial, direct reading with anti-fraud ring with 360° rotating lid. Produced in the versions for cold water (30°C) and hot water (90°C) in the diameters 15 and 20 mm (1/2"-3/4"). Long durability guaranteed.

## Mod. CPR-M3

Chorro único, esfera húmeda, lectura directa. Equipado de anillo antifraude con tapa orientable a 360°. Producido en las versiones para agua fría (30°C) y caliente (90°C) en los calibres  $\varnothing$  15 y 20 mm (1/2"-3/4"). Garantía de larga duración.

## Mod. CPR-M3

Einzelwasserstrahl, nasses Ziffernblatt, Direktablesung. Ausgestattet mit anti-Betrug Ring mit richtbarem Deckel 360°. Produziert in den Versionen Kaltwasser (30°C) Warmwasser (90°C) in den Durchmessern 15 und 20 mm (1/2 Zoll-3/4 Zoll). Garantiert lange Haltbarkeit.

## Mod. CPR-M3

Jet unique, cadran noyé à lecture directe. Equipé d'une bague d'inviolabilité avec couvercle orientable à 360°. Disponible en la version pour eau froide (30°C) ou eau chaude (90°C) en 2 calibres 15 ou 20 mm (1/2" ou 3/4"), fiabilité dans le temps.

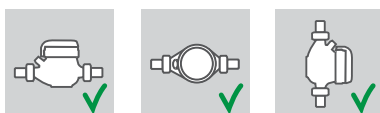
## Мод. CPR-M3

Одноструйный счетчик с мокрым квадрантом и прямым считыванием, антимагнитным кольцом и вращающейся на 360° крышкой. Выпускается в версиях для холодной (30°C) и горячей (90°C) воды диаметрами условного прохода 15 и 20 мм (1/2" – 3/4"). Гарантия долговечности.

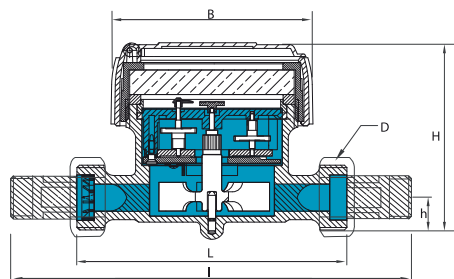
## Caratteristiche tecniche - Technical features

Calibro Size	DN	mm in	15 (1/2")	20 (3/4")	
Portata di sovraccarico Overload flow rate	Q <sub>4</sub>	m <sup>3</sup> /h	3.12	5	
	Q <sub>3</sub>	m <sup>3</sup> /h	2,5	4	
R = 100H	Portata di transizione Transitional flow rate	Q <sub>2</sub>	l/h	40	64
	Portata minima Min flow rate	Q <sub>1</sub>	l/h	25	40
R = 160H	Portata di transizione Transitional flow rate	Q <sub>2</sub>	l/h	25	40
	Portata minima Min flow rate	Q <sub>1</sub>	l/h	15,63	25
Lettura minima Min reading		l	0,05		
	Lettura massima Max reading		m <sup>3</sup>	99.999	
	Pressione max ammissibile Max admissible pressure MAP		bar	16	

### Posizione d'installazione Installation position

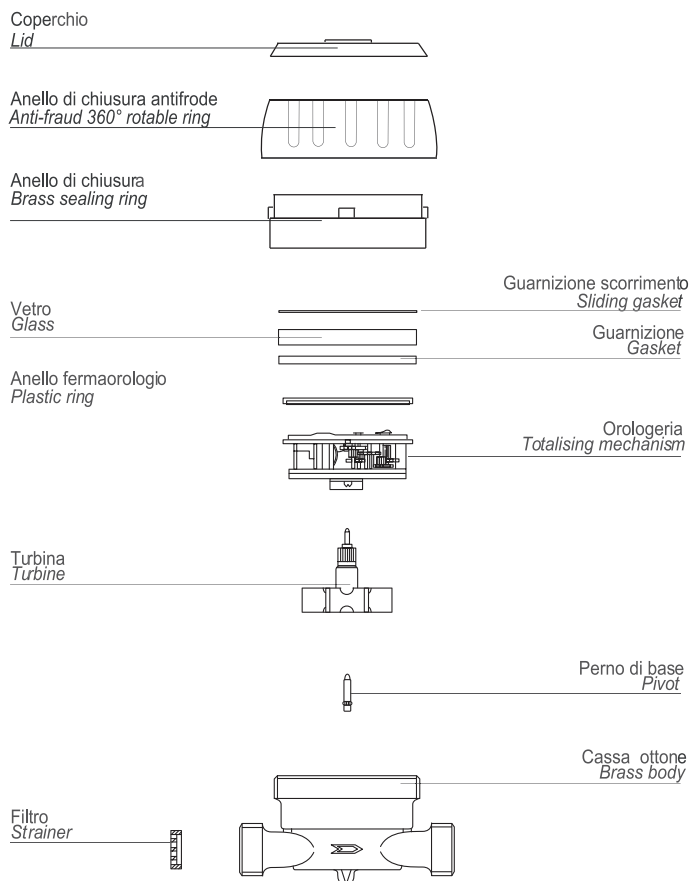


### Dimensioni e pesi - Dimensions and Weights



Calibro Size	mm in	15 (1/2")	20 (3/4")
L	mm	110	130
l	mm	190	228
H	mm	80	80
h	mm	18	18
B	mm	80	80
D	Filettatura Threading	in	3/4"      1"
Pesi Weight	con raccordi with unions	kg	0,76      0,93
	senza raccordi without unions	kg	0,62      0,69

Filettatura - Threading EN ISO 228-1:2000



### Versione base - Basic version

- » MID R100-H/V 2004/22/CE
- » Disponibile in versione per acqua fredda 0°C-30°C e per acqua calda 30°C-90°C
- » Trasmissione meccanica
- » Lettura diretta su 5 rulli numeratori
- » Quadrante bagnato
- » Coperchio girevole
- » MID R100-H/V 2004/22/CE
- » Available for cold water 0°C-30°C and for hot water 30°C-90°C
- » Mechanical transmission
- » Direct reading on 5 numeric
- » Wet dial
- » Rotating lid

### Su richiesta - Upon request

- » Versioni MID R160-H/R100-V, MID R200-H/R100-V, MID R250-H/R125-V
- » Version MID R160-H/R100-V, MID R200-H/R100-V, MID R250-H/R125-V